

BRAND QUALITY WITHOUT THE BRAND



PREMIUM TRAINING
& TEAMWEAR



CONTENTS

4	Brand Quality Without The Brand
8	Teamwear Suppliers
10	Sports Brands
12	Schoolwear Resellers
14	Fit for Purpose
16	Ethical and Social Responsibilities
18	Oeko-tex Standard 100 & ITS Intertek
20	Technical Performance Guide
22	Raleigh International Partnership
24	Marketing & Media
26	Edge Range
48	iGen Schoolwear Range
64	Radial Cricket Range
76	Pro Range
88	Core Range



BRAND QUALITY
WITHOUT THE BRAND



UK STOCK
SUPPORTED



FIT FOR
PURPOSE



RESELLER
BENEFITS



ETHICAL & SOCIAL
RESPONSIBILITIES



TECHNICAL
PERFORMANCE GUIDE



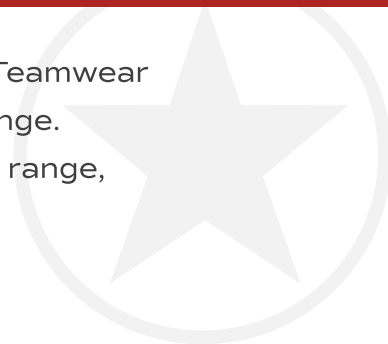
PRINT &
EMBROIDERY



MARKETING &
MEDIA SUPPORT

BRAND QUALITY WITHOUT THE BRAND

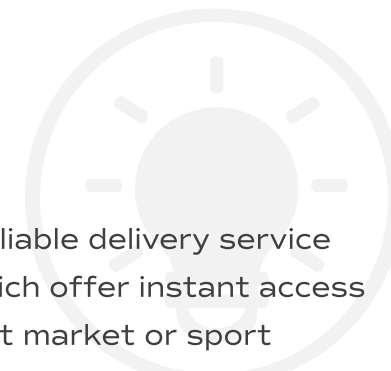
Here's why Sports brands, School and Teamwear resellers put their trust in this stock range. The next level co-ordinated sportswear range, "Brand Quality without the Brand".



RESELLER BENEFITS

This range offers sportswear resellers and ultimately the end user a credible, premium alternative to high profile brands. Owing to the exceptional quality, durability and style of this range, you can offer the wearer a reliable and comprehensive best in class product whilst benefitting from highly competitive reseller prices and margins. This range is available through

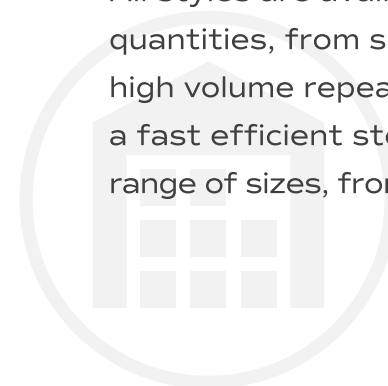
a trusted and reliable delivery service for products which offer instant access to your specialist market or sport without the need for investing in high value stock or storage. All styles are available season after season offering teams, clubs and schools the continuity they require along with the confidence to invest in new kit knowing availability is guaranteed.



UK STOCK SUPPORTED

Over 50 styles are UK stock supported and ready for immediate dispatch. Resellers can be confident in the knowledge that all styles are replenished regularly throughout the year. Unlike many larger traditional sports brands these stock designs are not subject to fickle retail trends.

All styles are available in manageable quantities, from single pieces up to high volume repeat orders. Offering a fast efficient stock service in a full range of sizes, from age 4 years to 4XL.



**NEXT LEVEL
CO-ORDINATED
SPORTSWEAR RANGE**





FIT FOR PURPOSE

This fully coordinated range is carefully designed in the UK by an experienced team of garment specialists.

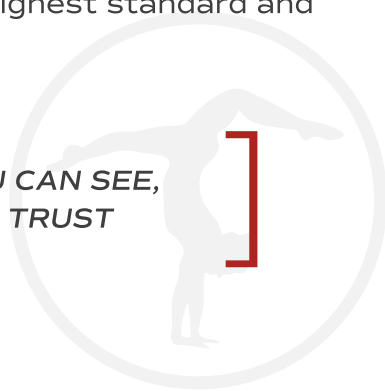
Manufacturing is conducted by handpicked specialist sportswear partners. Close attention is paid to reinforcing garments in all the right places and specifying fit for purpose fabrics and trims, which ultimately leads to fewer unwanted returns.

A proven quality control procedure is integral to manufacturing garments to the highest standard. Making sure they fit and function according to their intended use and giving the wearer confidence in the product.

Quality is rigorously controlled at all stages to ensure genuine durable, “fit for purpose” clothing. All the approved and accredited factories producing this range benefit from well-established in-house quality control procedures.

In addition, independent QC Personnel are trained to work exclusively with the range, ensuring every detail is monitored and tested to the highest standard and specification.

**QUALITY YOU CAN SEE,
FEEL AND TRUST**



PRINT & EMBROIDERY

All styles are designed to enable both print and embroidery embellishment with hidden access zips in all the right places.

MARKETING & MEDIA

Stay up to date with new ranges, running styles and product developments via a stylish and comprehensive library of photography and images. All colours are available on request in 3D CADs, mannequin shots and on-location model photography. Presentation visuals are available on request to showcase a tailored visual of how your kit might look once embellished.

TECHNICAL PERFORMANCE GUIDE

The first choice for genuine premium quality performance, “non branded” team and training wear. A simple but clear technical performance guide using individual icons that helps identify the key features of all products. Covering everything from reinforced seams for added strength to waterproof coating to keep out the worst of the weather.





TEAMWEAR SUPPLIERS

PREMIUM CO-ORDINATED
TEAMWEAR AVAILABLE
FROM UK STOCK

Only the best-in-class fabrics and fit for purpose garments are available, developed by the industry's leading specialists in the manufacture and supply of brand quality, unbranded, multisport and training wear. This range offers a highly credible alternative to traditional sports brands.

With over 50 styles available in up to 10 colour combinations all from UK stock, you can rely on a fast turnaround and delivery on everything from Baselayers to Bench Coats. Enabling you to offer your customers all they need, in their team colours.

All garments are unbranded and developed with customisation in mind. They are designed to provide appropriate locations for logo, crests and embellishments to suit you and your customers' requirements. The exceptional product quality and flexible

service means you can provide a premium product range and benefit from highly competitive margins.

*A CREDIBLE ALTERNATIVE
TO FAMOUS OR SPECIALIST
TEAM BRANDS*



SPORTS BRANDS TRUSTED SERVICE AND STOCK SUPPORT

The range gives you a serious UK stock alternative to high profile sports brands that can help your brand grow. Providing innovative 'brand quality' technical garments at a sensible cost.

For unrivalled garment quality, tried and tested durability and modern designs, there isn't a more superior 'unbranded' offering on the market.

The designs, fabrics and quality assurance procedures mean you have reliable style options that are fully coordinated, with season-on-season continuity across all the sizes. The broad range of styles available enables you to tailor your brands offering to your target market and expand into new sporting sectors with fit for purpose, premium quality garments.



*FULLY COORDINATED
WITH SEASON ON SEASON
CONTINUITY ACROSS
ALL SIZES*



SCHOOLWEAR RESELLERS

RELIABLE, FIT FOR PURPOSE

STYLES WITH LONGEVITY

To meet the growing demand for high spec sportswear in the educational sector; reliability, continuity and innovation are key considerations when developing these ranges.

Quality assurance standards ensure all garments are consistently sized and prove fit for purpose. Passing rigorous

durability testing to make sure they stand up to the demands of school sportswear, which is great news for parents!

The expanding range of sports and PE styles are available in a choice of up to 10 co-ordinated colours in sizes that cover the full schoolwear spectrum.

Forming the nucleus of countless P.E and school sports kits is the ever-popular iGEN range. Consists of 7 specifically developed styles that are complimented by a broad catalogue of coordinated, UK stocked styles. Allowing you to tailor your offering to the school's needs and requirements.

*ATTENTION TO DETAIL
IS A TOP PRIORITY FROM
STITCHING AND SEAMS
TO UNIQUE DESIGN FEATURES
AND NEW PRODUCT
DEVELOPMENT*



FIT FOR PURPOSE



To ensure a garment is genuinely fit for purpose takes experience and know how. It starts right at the beginning with the design process, where attention to detail is key.

Designers and garment technologists combine to select the best and most suitable fabric and trims, whilst considering the right fit and sizing for the intended use. Maybe a high tensile fabric for a pro rugby short or

a laser cut design feature to remove perspiration from a cricket shirt in the height of summer – it's all in the detail, and integral to the right finished product.

Genuinely “Brand Quality, Without The Brand” - Extensive feedback is taken from a wide selection of end users and resellers to schools, universities and colleges. As well as many pro and semi-pro sportswear specialists, all

contributing to the resulting multisport teamwear range that is to be admired, where many fall short in terms of quality over price.

This highly considered range is manufactured using the best of UK design and teamsport clothing and fabric knowledge. The creation of detailed technical specifications followed by a rigorous sample and wearer trial process means these

garments are the best they can be by the time they are signed off for bulk production.

But it doesn't end there – pre-production and in-line quality control checks on all styles followed by a final inspection prior to shipment, all contribute to make this a trusted go-to range you can see, feel and touch... ready to go and fit for purpose.



ETHICAL & SOCIAL RESPONSIBILITIES

In a world where the threat of environmental disaster is critical coupled with the knowledge displacement and abuse of peoples and workers around the world. Manufacturers and suppliers, especially those within clothing and textiles sector, have a responsibility to make sure all reasonable steps are taken to ensure their products are not only ethically sourced but do not unnecessarily impact on

the environment. Seeking where possible to minimise and counter their environmental footprint. This range of garments adheres to the following ethical and environmental sourcing practices continuously.

INDEPENDENTLY TESTED
TO RECOGNISED
INTERNATIONAL STANDARDS

CODE OF CONDUCT

All factories used in the production of this range must:

Adhere to at least one internationally recognised ethical code of practice such as Sedex, Wrap, BSCI, SMETA or Bureau Veritas

- Allow factory inspection visits without warning
- Source all specified fabric and trims from Oeko-tex approved suppliers
- Meet international testing standards for “Confidence in Textiles”
- Utilise both recycled and biodegradable packaging wherever possible
- Sponsor carbon offset / tree planting schemes to help reduce global Co2 levels



- NO EXCESSIVE WORKING HOURS
- EMPLOYMENT FREELY CHOSEN
- NO DISCRIMINATION
- SAFE, HYGENIC WORKPLACE
- LIVING WAGES
- REGULAR EMPLOYMENT
- EMPLOYEE BENEFITS





TESTING STANDARDS



The rigours of teamsport at both professional and grass roots level, as well as in the education sector, requires garments to be completely durable and hardwearing. Over and above any initial due diligence on prototypes and a comprehensive sampling assessment involving size sets and pre- production samples, all fabrics, trims and finished garments are tested and checked throughout the production process.

The complete development and production process of this premium multisport range is fully managed by a dedicated and experienced team both in the UK and at source in China. No 3rd parties are involved which helps ensure consistent quality is maintained time after time. The advantages of having a dedicated quality control team on the ground and responsible for managing the production of this garment range, is highly significant. It allows for quick decision-making during time critical production and ensuring bulk production replicates the original approved garment samples and specifications in detail.

BEFORE PRODUCTION

Fabric is tested to BS EN ISO standards with ITS INTERTEK

- Colourfastness to washing
- Wet / dry rub
- Snagging / pilling
- Seam strength
- Stretch recovery (knit fabrics)
- Dimensional stability to washing (shrinkage)
- Fabric and trim colour approval
- Fabric weight approval
- Packaging approval



DURING PRODUCTION

A comprehensive inline inspection by employed quality control manager over and above any in house inspection process - garments are checked for size conformity, sewing and stitch quality, overall trim application and general quality.

AFTER PRODUCTION

Full finished and packed garment AQL 2.5 international inspection by employed quality manager over and above in-house inspection - All inspection UK approved prior to loading and shipment to the UK.



TECHNICAL
PERFORMANCE GUIDE

SETTING THE STANDARD
IN GARMENT
PERFORMANCE QUALITY

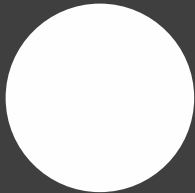
PROTECTION FROM THE ELEMENTS



WIND RESISTANT



WATERPROOF



TAPED SEAMS



SHOWERPROOF

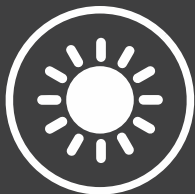
PERFORMANCE & COMFORT



BREATHABLE



THERMAL BALANCE



WARMTH



QUICK DRY

PRACTICAL FEATURES



EASY CARE



ACCESS ZIPS



REINFORCED



LIGHTWEIGHT



Raleigh International

The climate crisis requires action from responsible suppliers to minimize carbon output whilst recapturing carbon currently in the atmosphere.

Raleigh International is a global youth action organization centered on reforestation and sustainable development to combat climate change. Raleigh's reforestation initiatives around the world have not only planted millions of trees, locking in tens of thousands of tons of carbon but have also educated hundreds of thousands of young people to lead communities to a greener more sustainable future.

From Tanzania to the Highlands of Scotland, projects are underway to protect precious woodland habitats and to replant and renew lost forests to ultimately reduce the journey to carbon net zero.

Alongside campaigns to reverse deforestation, Raleigh links young people across the world to act for a fair, inclusive and green world that confronts the planet's most urgent crises. Supporting young people to create new green jobs and lead the fight against waste and pollution.

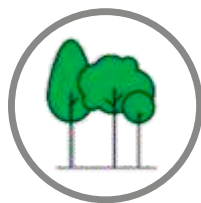
www.raleighinternational.org

REVERSING DEFORESTATION
ONE SAPLING AT A TIME

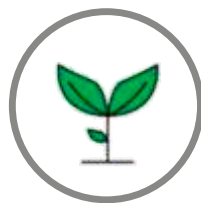
IN PROUD PARTNERSHIP WITH RALEIGH INTERNATIONAL



532,000
SEEDLINGS
TRANSPLANTED INTO
TREE NURSERIES



323
ACRES
OF LAND
REPLANTED



4
TREE NURSERIES
CREATED IN
4 VILLAGES

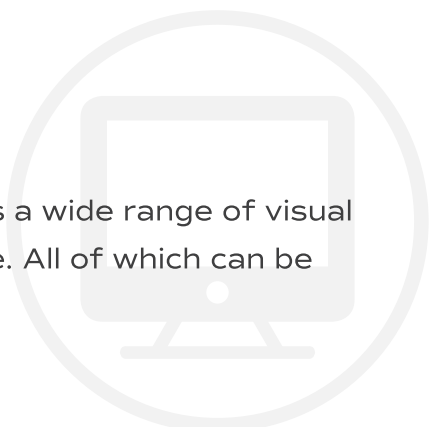


617
COMMUNITY MEMBERS
TRAINED IN NATURAL
RESOURCE MANAGEMENT



MARKETING & MEDIA SUPPORT

To help you with your ongoing marketing efforts there is a wide range of visual images so you can present and promote with confidence. All of which can be supplied upon request.



BESPOKE PRESENTATION VISUALS

Presentation visuals are ideal for showcasing fully coordinated team and training wear ranges. Logos, crests and any personalisation can be incorporate for maximum range affinity.



LOCATION PHOTOGRAPHY

A huge library of location and studio photography featuring all team, school and trainingwear styles in a variety of colours is available upon request.



MANNEQUIN VISUALS

Presentation visuals are ideal for showcasing fully coordinated team and training wear ranges. Logos, crests and any personalisation can be incorporate for maximum range affinity.



HIGH QUALITY 3D CADS

High-definition CADs are available in four angles for all styles, in every colour. The details, stitching and colours have been replicated to provide as accurate an illustration of the actual garment as possible.



END USER BROCHURES

Unbranded end-user brochures are available. From the full product offering to mini range focused brochures, they only display relevant information for the end-user. End-user brochures come in PDF format and can be shared directly.





EDGE PLAYERS

868

EDGE PRO TEAM MIDLAYER

PREMIUM QUALITY 1/4 ZIP MIDLAYER

- Premium ¼ zip midlayer
- 220gsm full dull flat knit polyester with antipill fleece reverse
- Contoured arm panel in two tone contrast mesh fabric
- Scooped hem with contrast colour reversed zipper tape
- Signature “Edge” range colour contrast print details
- Perfect for layering up in style



THERMAL
BALANCE



QUICK DRY



LIGHTWEIGHT



WARMTH



EASY CARE



9 STOCK COLOUR COMBINATIONS



Black / Black/Amber / Black/Emerald / Black/Red / Black/White
Navy / Navy/Red / Navy/Sky / Navy/White

868 EDGE PRO TEAM MIDLAYER SIZE GUIDE

Size	XSY	SY	MY	LY	XLY	S	M	L	XL	2XL	3XL	4XL
Years	6/7	8/9	10/11	12/13								
Chest Inches (to fit)	24/26	26/28	28/30	30/32	32/34	34/36	38/40	42/44	46/48	48/50	50/52	52/54
Chest cm (to fit)	61/66	66/71	71/76	76/81	81/86	86/91	97/102	107/112	117/122	122/127	127/132	132/137
Vatable	No	No	No	No	No	Yes	Yes	Yes	Yes	Yes	Yes	Yes

EDGE RANGE



2 STOCK COLOUR COMBINATIONS



Black / Navy







867 EDGE PRO TEAM POLO SIZE GUIDE

Size	LY	XLY	S	M	L	XL	2XL	3XL	4XL
Years	12/13								
Chest Inches (to fit)	30/32	32/34	34/36	38/40	42/44	46/48	48/50	50/52	52/54
Chest cm (to fit)	76/81	81/86	86/91	97/102	107/112	117/122	122/127	127/132	132/137
Vatable	No	No	Yes	Yes	Yes	Yes	Yes	Yes	Yes

-  BREATHABLE
-  QUICK DRY
-  EASY CARE

867

EDGE PRO TEAM POLO
CONTEMPORARY PREMIUM POLO SHIRT

-  180gsm super soft technical polyester pique
-  Scooped hem and side detail
-  Performance fit
-  New grandad style ribbed collar
-  Signature “Edge” range print details
-  A classic but innovative design combined with premium fabric

EDGERANGE



874

EDGE PRO POLY HOODIE

PREMIUM QUALITY, TECHNICAL HOODIE

- Ultra warm hooded top
- 260gsm full dull polyester face with heavy brushed back
- Contemporary design front pocket pouch
- Contoured arm panel in two tone contrast mesh fabric
- Signature “Edge” range colour contrast print details
- A forward thinking performance hoodie



THERMAL
BALANCE



QUICK DRY



WARMTH



EASY CARE



9 STOCK COLOUR COMBINATIONS



Black / Black/Amber / Black/Emerald / Black/Red / Black/White
Navy / Navy/Red / Navy/Sky / Navy/White

874 EDGE PRO POLY HOODIE SIZE GUIDE

Size	XS	S	M	L	XL	2XL	3XL	4XL
Years	6/7	8/9	10/11	12/13				
Chest Inches (to fit)	24/26	26/28	28/30	30/32	32/34	34/36	38/40	42/44
Chest cm (to fit)	61/66	66/71	71/76	76/81	81/86	86/91	97/102	107/112
Vatable	No	No	No	No	No	Yes	Yes	Yes

EDGE RANGE



9 STOCK COLOUR COMBINATIONS



Black/Black / Black/Amber / Black/Emerald / Black/Red / Black/White
Navy/Navy / Navy/Red / Navy/Sky / Navy/White

865 EDGE PRO TRAINING TEE SIZE GUIDE

Size	XS	S	M	L	XL	2XL	3XL	4XL
Years	6/7	8/9	10/11	12/13				
Chest Inches (to fit)	24/26	26/28	28/30	30/32	32/34	34/36	38/40	42/44
Chest cm (to fit)	61/66	66/71	71/76	76/81	81/86	86/91	97/102	107/112
Vatable	No	No	No	No	No	Yes	Yes	Yes



LIGHTWEIGHT



QUICK DRY



BREATHABLE



EASY CARE

865

EDGE PRO TRAINING TEE

PREMIUM QUALITY, PERFORMANCE FIT TECHNICAL TEE

- ✓ Quick dry moisture management technical tee
- ✓ 140gsm ultra soft performance polyester micro knit
- ✓ Lightweight
- ✓ Scooped hem and contoured side panel
- ✓ Performance fit
- ✓ Signature "Edge" range colour contrast print details
- ✓ A premium quality multipurpose tee

EDGERANGE





2 STOCK COLOUR COMBINATIONS



Black / Navy

873 EDGE PRO HOODED JACKET SIZE GUIDE

Size	LY	XLY	S	M	L	XL	2XL	3XL	4XL
Years	12/13								
Chest Inches (to fit)	30/32	32/34	34/36	38/40	42/44	46/48	48/50	50/52	54/56
Chest cm (to fit)	76/81	81/86	86/91	97/102	107/112	117/122	122/127	127/132	137/142
Vatable	No	No	Yes	Yes	Yes	Yes	Yes	Yes	Yes

873

EDGE PRO HOODED JACKET

PREMIUM WEATHERPROOF, TECHNICAL OUTERLAYER

- ✓ 1/4 zip hooded pullover top
- ✓ 180gsm 3 layer bonded technical shell
- ✓ Water repellent and fully weatherproof
- ✓ Contoured arm panel in contrast fabric
- ✓ Signature “Edge” range print details
- ✓ Zipped chest pocket
- ✓ Dogtooth shock cord hood adjusters
- ✓ A unique outerwear alternative to basic showerproof jackets and tops

EDGERANGE



SHOWERPROOF

WIND RESISTANT

EASY CARE



860

EDGE PRO CONTACT TOP

NEXT LEVEL MULTI PURPOSE TRAINING TOP

- Colour contrast ribbed crew neck collar
- 180gsm 3 layer bonded technical shell
- Water repellent and fully weatherproof
- Contoured arm panel in contrast fabric
- Drawcord at hem and reinforced seams throughout
- Signature “Edge” range colour contrast print details
- Taking performance training tops to the next level

-  LIGHTWEIGHT
-  QUICK DRY
-  REINFORCED
-  EASY CARE
-  SHOWERPROOF
-  WIND RESISTANT



9 STOCK COLOUR COMBINATIONS



Black/Amber / Black/Emerald / Black/Red / Black/White / Black
Navy / Navy/Red / Navy/Sky / Navy/White

860 EDGE PRO CONTACT TOP SIZE GUIDE

Size	XS	S	M	L	XL	2XL	3XL	4XL
Years	6/7	8/9	10/11	12/13				
Chest Inches (to fit)	24/26	26/28	28/30	30/32	32/34	34/36	38/40	42/44
Chest cm (to fit)	61/66	66/71	71/76	76/81	81/86	86/91	97/102	107/112
Vatable	No	No	No	No	No	Yes	Yes	Yes

EDGE RANGE

870

APEX PRO GILET

LIGHTWEIGHT, STYLISH, SHOWERPROOF GILET

- ✓ Lightweight ultra stylish bodywarmer
- ✓ 60gsm hi density downproof miniature polyester ripstop
- ✓ Durable water repellent
- ✓ 160gsm wadding
- ✓ Brushed back polyester stretch side panels
- ✓ 2 side pockets
- ✓ Modern, versatile mid or outerlayer to keep you warm to the core

EDGERANGE



THERMAL
BALANCE



LIGHTWEIGHT



WIND
RESISTANT



WARMTH



SHOWERPROOF



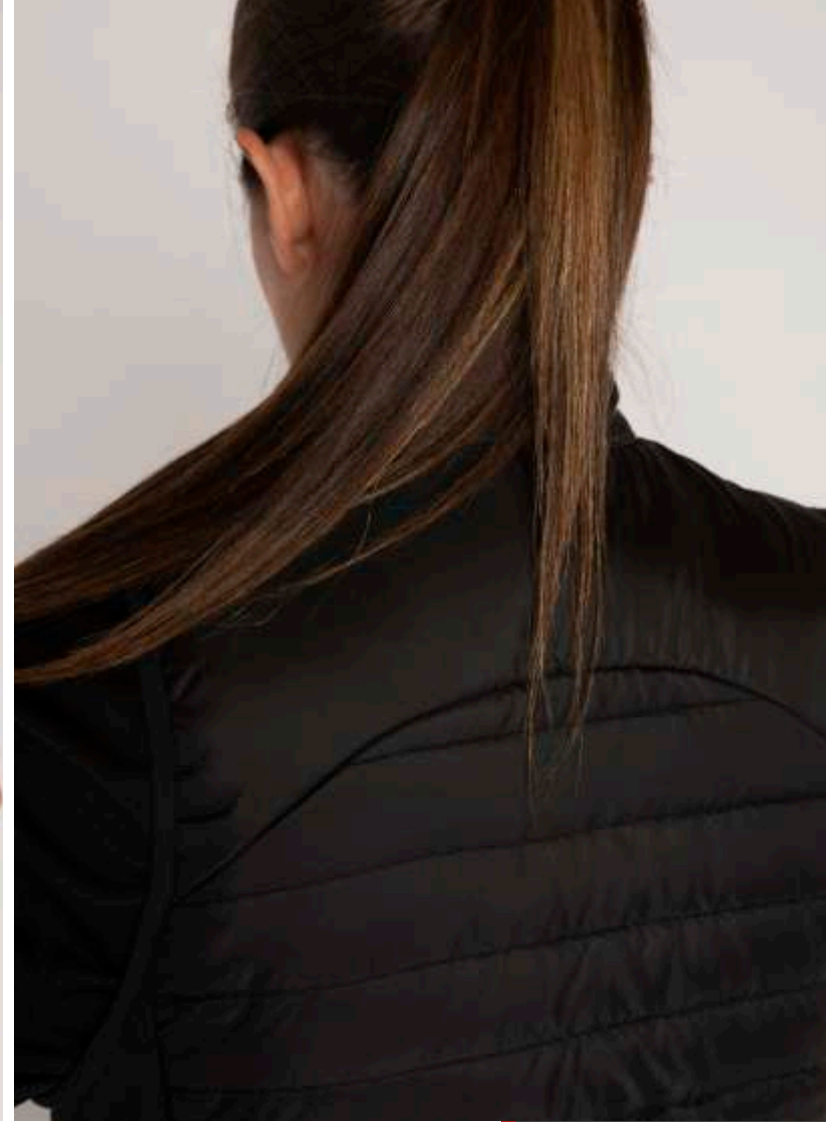
2 STOCK COLOUR COMBINATIONS



Black / Navy

870 APEX PRO GILET SIZE GUIDE

Size	XLY	S	M	L	XL	2XL	3XL	4XL
Years								
Chest Inches (to fit)	32/34	34/36	38/40	42/44	46/48	48/50	50/52	52/54
Chest cm (to fit)	81/86	86/91	97/102	107/112	117/122	122/127	127/132	132/137
Vatable	No	Yes	Yes	Yes	Yes	Yes	Yes	Yes



2 STOCK COLOUR COMBINATIONS



Black / Navy

910 APEX FEMALE GILET SIZE GUIDE

Size	6	8	10	12	14	16	18
Chest Inches (to fit)	30/32	32/34	34/36	36/38	38/40	40/42	42/44
Chest cm (to fit)	76/81	81/86	86/91	91/97	97/102	102/107	107/112
Vatable	No	Yes	Yes	Yes	Yes	Yes	Yes

910

APEX FEMALE GILET

FITTED, LIGHTWEIGHT BODYWARMER

- 60 gsm hi density downproof miniature polyester ripstop
- Durable and water repellent
- 160gsm wadding
- Brushed back polyester stretch side panels
- 2 zipped side pockets
- Feminine fit
- A versatile mid or outerlayer to keep you warm to the core

EDGERANGE



THERMAL
BALANCE



LIGHTWEIGHT



WIND
RESISTANT



WARMTH



SHOWERPROOF





WIND
RESISTANT



LIGHTWEIGHT



SHOWERPROOF



WARMTH



EASY CARE



ACCESS ZIP

2 STOCK COLOUR COMBINATIONS



Black / Navy

894 EDGE PRO COAT SIZE GUIDE

Size	XSY	SY	MY	LY	XLY	S	M	L	XL	2XL	3XL	4XL
Years	6/7	8/9	10/11	12/13								
Chest Inches (to fit)	24/26	26/28	28/30	30/32	32/34	34/36	36/40	42/44	46/48	48/50	50/52	54/56
Chest cm (to fit)	61/66	66/71	71/76	76/81	81/86	86/91	97/102	107/112	117/122	122/127	127/132	137/142
Vatable	No	No	No	No	No	Yes	Yes	Yes	Yes	Yes	Yes	Yes



894

EDGE PRO COAT

CONTEMPORARY WADDED TEAM JACKET

- 85gsm lightweight high density polyester pongee outer with 180gsm thermal wadding
- Quilted liner with weatherproof internal chest zipper
- Moulded cuff adjusters
- Storm peak to hood
- Signature "Edge" range print details
- Contemporary fit and shape
- Concealed internal zips for easy embellishment access

EDGE RANGE

851

EDGE SKINNY PANT

THE SUPER SKINNY PERFORMANCE PANT

- Super soft touch 240gsm polyester high stretch fabric
- Contrast hexagon knit fabric panels
- New generation technical waistband
- 2 pockets with locking zips
- Signature “Edge” range print details down the calves
- Contemporary super skinny fit and shape



LIGHTWEIGHT



WARMTH



EASY CARE



2 STOCK COLOUR COMBINATIONS



Black / Navy

851 EDGE SKINNY PANT SIZE GUIDE

Size	XS	S	M	L	XL	2XL	3XL	4XL
Years	6/7	8/9	10/11	12/13				
Waist Inches (to fit)	20/22	22/24	24/26	26/28	28/30	30/32	32/34	36/38
Waist cm (to fit)	51/56	56/61	61/66	66/71	71/76	76/81	81/86	91/97
Inside Leg Inches	18.5	20.5	22.5	24.5	26.5	27.5	29.5	30.5
Inside Leg cm	47	52	57	62	67	70	73.5	77.5
Vatable	No	No	No	No	No	Yes	Yes	Yes

EDGE RANGE

A photograph of three children, a girl on the left, a boy in the center, and a boy on the right, all wearing dark navy blue tracksuits with light blue accents. They are leaning on a wooden fence in an outdoor setting with green foliage in the background. The girl on the left is looking towards the camera. The boy in the center is looking directly at the camera. The boy on the right is seen from the back, looking away. The text 'iGEN RANGE' is overlaid on the image, with 'iGEN' in dark blue and 'RANGE' in red. A white geometric line pattern is also visible across the image.

iGEN RANGE



11 STOCK COLOUR COMBINATIONS



Black/Amber / Black/Bottle / Black/Purple / Black/Red
 Black/Sky / Black/White / Black/Maroon
 Navy/Amber / Navy/Red / Navy/Sky / Navy/White

806 iGEN UNISEX POLO SIZE GUIDE

Size	20/22	24/26	26/28	28/30	30/32	32/34	34/36	36/38	38/40	42/44	46/48	50/52
Chest inches (to fit)	20/22	24/26	26/28	28/30	30/32	32/34	34/36	36/38	38/40	42/44	46/48	50/52
Chest cm (to fit)	51/56	61/66	66/71	71/76	76/81	81/86	86/91	91/97	97/102	107/112	117/122	127/132
Vatable	No	No	No	No	No	No	No	No	Yes	Yes	Yes	Yes

iGEN
RANGE

806

iGEN UNISEX POLO

MIX AND MATCH WITH iGEN 803 AND 804

- 4 piece PE and games clothing range
- Available in 11 stock colour combinations
- 180gsm ultra soft performance polyester microdot knit
- Full dull, high count microdot fabric
- Quick dry function
- Traditional design with stylish modern details



QUICK DRY



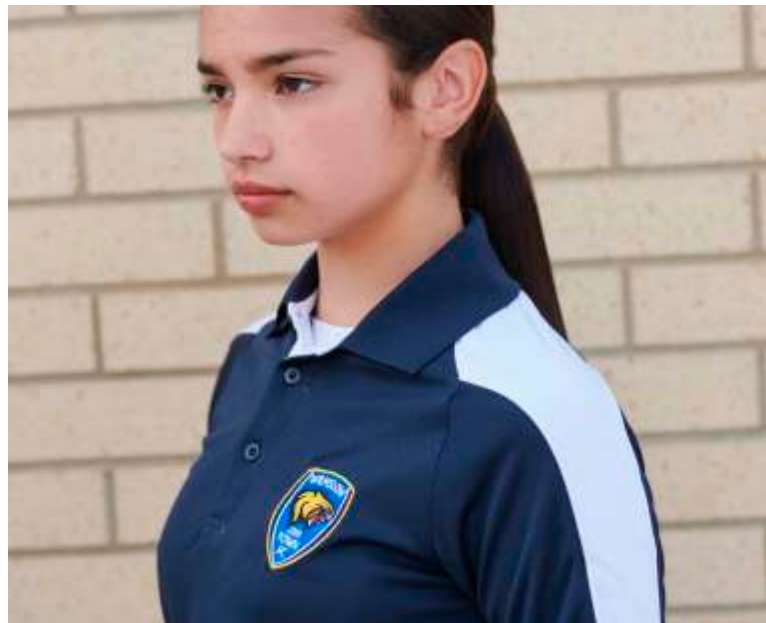
LIGHTWEIGHT



BREATHABLE



EASY CARE



803

iGEN UNISEX SHORT

MIX AND MATCH WITH IGEN 801 AND 806

- 4 piece core PE games kit
- 180gsm ultra soft performance polyester knit
- Full dull, high count microdot fabric
- Quick dry function
- Traditional design with stylish modern features



LIGHTWEIGHT



QUICK DRY



BREATHABLE



EASY CARE



13 STOCK COLOUR COMBINATIONS



Black / Black/Amber / Black/Bottle / Black/Purple / Black/Red
Black/Sky / Black/White / Black/Maroon
Navy / Navy/Amber / Navy/Red / Navy/Sky / Navy White

803 iGEN UNISEX SHORT SIZE GUIDE

Size	18/20	20/22	22/24	24/26	26/28	28/30	30/32	32/34	36/38	38/40	42/44	44/46
Size	XXSY	XS	SY	MY	LY	XL	S	M	L	XL	2XL	3XL
Waist inches (fit)	18/20	20/22	22/24	24/26	26/28	28/30	30/32	32/34	36/38	38/40	42/44	44/46
Waist cm (fit)	46/51	51/55	56/61	61/66	66/71	71/76	76/81	81/86	91/97	97/102	106/112	112/117
Vatable	No	No	No	No	No	No	Yes	Yes	Yes	Yes	Yes	Yes

iGEN
RANGE



11 STOCK COLOUR COMBINATIONS



Black/Amber / Black/Bottle / Black/Purple / Black/Red
 Black/Sky / Black/White / Black/Maroon
 Navy/Amber / Navy/Red / Navy/Sky / Navy/White

801 iGEN FEMALE POLO SIZE GUIDE

Size	20/22	24/26	26/28	28/30	30/32	32/34	34/36	36/38	40/42	42/44	44/46	46/48
Chest inches (to fit)	20/22	24/26	26/28	28/30	30/32	32/34	34/36	36/38	40/42	42/44	44/46	46/48
Chest cm (to fit)	51/56	61/66	66/71	71/76	76/81	81/86	86/91	91/97	102/107	107/112	112/117	117/122
Vatable	No	No	No	No	No	No	No	No	Yes	Yes	Yes	Yes

iGEN
RANGE

801

iGEN FEMALE POLO

MIX AND MATCH WITH IGEN 803 AND 804

- 4 piece core PE games kit
- 180gsm ultra soft performance polyester knit
- Full dull, high count microdot fabric
- Quick dry function
- Traditional design with stylish modern features



QUICK DRY



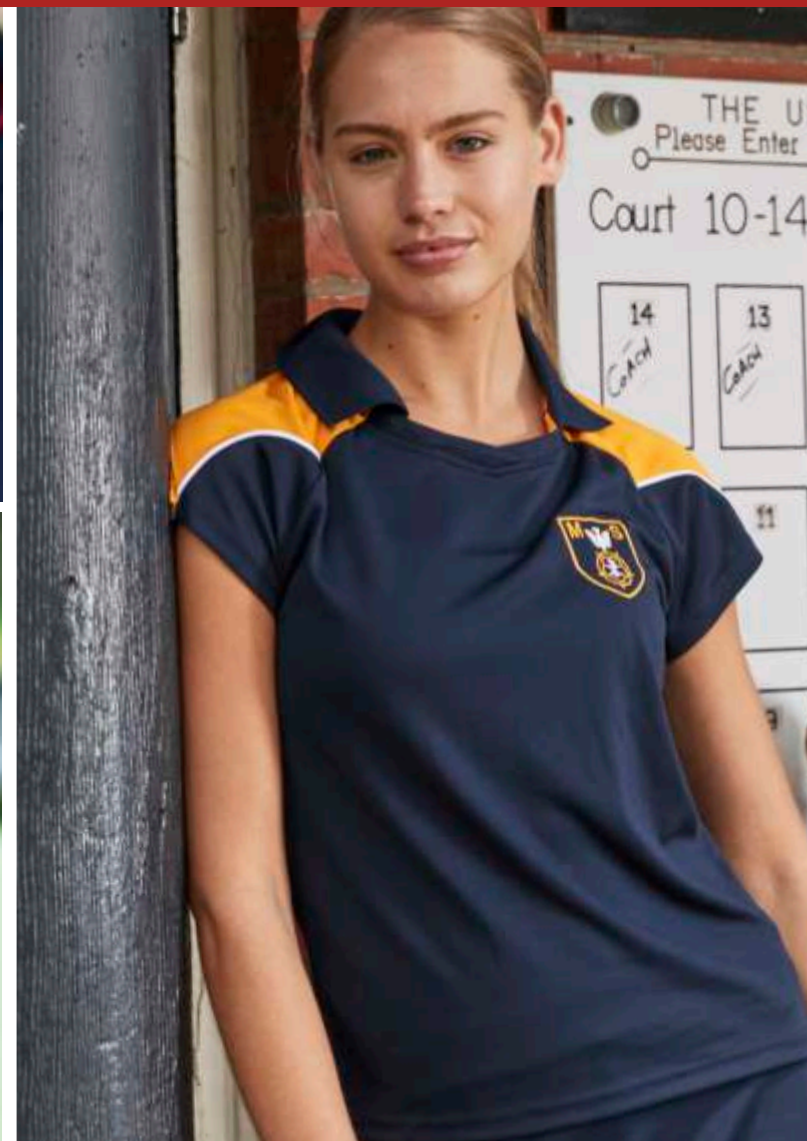
LIGHTWEIGHT



BREATHABLE



EASY CARE



804

iGEN TEAM SKORT

MIX AND MATCH WITH IGEN 801 AND 806

- 4 piece core PE games kit
- 180gsm ultra soft performance polyester knit
- Full dull, high count microdot fabric
- Quick dry function
- Traditional design with stylish modern features



LIGHTWEIGHT



QUICK DRY



BREATHABLE



EASY CARE



13 STOCK COLOUR COMBINATIONS



Black / Black/Amber / Black/Bottle / Black/Purple / Black/Red
Black/Sky / Black/White / Black/Maroon
Navy / Navy/Amber / Navy/Red / Navy/Sky Navy/White

804 iGEN TEAM SKORT SIZE GUIDE

Size	18/20	20/22	22/24	24/26	26/28	28/30	30/32	32/34	34/36	36/38
Waist inches (Fit)	18/20	20/22	22/24	24/26	26/28	28/30	30/32	32/34	34/36	36/38
Waist cm (Fit)	46/51	51/56	56/61	61/66	66/71	71/76	76/81	81/86	86/91	91/97
Inside Leg inches (Actual)	10	11	12	13	14	15	16	16	16	17
Inside Leg cm (Actual)	25.0	28.0	31.5	33.5	36.0	38.0	39.5	40.5	41.5	42.5
Vatable	No	No	No	No	No	Yes	Yes	Yes	Yes	Yes

iGEN
RANGE



2 STOCK COLOUR COMBINATIONS



Black / Navy

890 iGEN TAPERED PANT SIZE GUIDE

Size	18/20	20/22	22/24	24/26	26/28	28/30	30/32	32/34	36/38	38/40	42/44	44/46	46/48
Size	XXSY	XSY	SY	MY	LY	XLY	S	M	L	XL	2XL	3XL	4XL
Years	4/5	6/7	8/9	10/11	12/13								
Waist inches (fit)	18/20	20/22	22/24	24/26	26/28	28/30	30/32	32/34	36/38	38/40	42/44	44/46	46/48
Waist cm (fit)	46/51	51/56	56/61	61/66	66/71	71/76	76/81	81/86	91/97	97/102	106/112	112/117	117/122
Vatable	No	No	No	No	No	No	Yes	Yes	Yes	Yes	Yes	Yes	Yes

iGEN
RANGE

890

iGEN TAPERED PANT

COMBINES WITH STYLE 888 TO MAKE A FULL SUIT

- 230gsm flat knit polyester with warm brushed reverse
- Durable, hard wearing fabric
- Drawstring waist
- 2 Pockets with locking zips
- Contrast stretch rib calf panel for a tapered fit
- Locking ankle zip



THERMAL
BALANCE



WARMTH



EASY CARE



888

iGEN MIDLAYER

COMBINES WITH STYLE 890 TO MAKE A FULL SUIT

- 230gsm flat knit polyester with warm brushed reverse
- Durable, hard wearing fabric
- Locking zip with zip guard
- Textured rib on cuffs and waist hem
- 8 stock iGen colour combinations



THERMAL
BALANCE



WARMTH



EASY CARE



8 STOCK COLOUR COMBINATIONS



Black / Black/Emerald / Black/Red / Black/Sky
Navy / Navy/White / Navy/Red / Navy/Sky

888 iGEN MIDLAYER SIZE GUIDE

Size	20/22	24/26	26/28	28/30	30/32	32/34	34/36	36/38	38/40	42/44	46/48	50/52	52/54
Years	4/5	6/7	8/9	10/11	12/13								
Chest inches (to fit)	20/22	24/26	26/28	28/30	30/32	32/34	34/36	36/38	38/40	42/44	46/48	50/52	52/54
Chest cm (to fit)	51/56	61/66	66/71	71/76	76/81	81/86	86/91	91/97	97/102	107/112	117/122	127/132	132/137
Vatable	No	No	No	No	No	No	No	No	Yes	Yes	Yes	Yes	Yes

iGEN
RANGE



2 STOCK COLOUR COMBINATIONS



Black / Navy

838 iGEN LEGGING SIZE GUIDE

Size	18/20	20/22	22/24	24/26	26/28	28/30	30/32	32/34	36/38	40/42
Waist inches	18/20	20/22	22/24	24/26	26/28	28/30	30/32	32/34	36/38	40/42
Waist cm	46/51	51/56	56/61	61/66	66/71	71/76	76/81	81/86	86/91	101/106
Inside Leg inches	22	23	24	25	25	25.5	26	26	26.5	27
Inside Leg cm	55.5	58.5	61	63	64	65	66	67	68	69
Vatable	No	No	No	No	No	Yes	Yes	Yes	Yes	Yes

iGEN
RANGE

838

iGEN LEGGING
FUNCTIONAL OUTERWEAR STRETCH LEGGING

- Soft touch 240gsm polyester spandex knit fabric
- Quick dry fabric to keep you warm and dry
- Wider elasticated waistband for a more secure fit
- Fewer panelled seams allows ease to add multiple embellishments



QUICK DRY



BREATHABLE



EASY CARE



RADIAL CRICKET



882

RADIAL SHORT SLEEVE CRICKET SHIRT

BREATHABLE POLO SHIRT

- > 180 gramme textured polyester microknit body fabric
- > Ultra soft contrast side panel with technical laser cut ventilation
- > Double placket button down collar
- > Contemporary coordinated design



LIGHTWEIGHT



QUICK DRY



BREATHABLE



EASY CARE



1 STOCK COLOUR



Cricket White

882 RADIAL SHORT SLEEVE CRICKET SHIRT SIZE GUIDE

Size	XS	S	M	L	XL	2XL	3XL
Years	6/7	8/9	10/11	12/13			
Chest inches (to fit)	24/26	26/28	28/30	30/32	32/34	34/36	38/40
Chest cm (to fit)	61/66	66/71	71/76	76/81	81/86	86/91	97/102
Vatable	No	No	No	No	No	Yes	Yes

RADIAL
CRICKET

883

RADIAL LONG SLEEVE CRICKET SHIRT

CONTEMPORARY COMFORT FIT DESIGN

- ✓ 180 gramme textured polyester microknit body fabric
- ✓ Ultra soft contrast side panel with technical laser cut ventilation
- ✓ Double placket button down collar
- ✓ Contemporary coordinated design



LIGHTWEIGHT



QUICK DRY



BREATHABLE



EASY CARE



1 STOCK COLOUR



Cricket White

883 RADIAL LONG SLEEVE CRICKET SHIRT SIZE GUIDE

Size	LY	XLY	S	M	L	XL	2XL	3XL
Years	12/13							
Chest inches (to fit)	30/32	32/34	34/36	38/40	42/44	46/48	48/50	50/52
Chest cm (to fit)	76/81	81/86	86/91	97/102	107/112	117/122	122/127	127/132
Vatable	No	No	Yes	Yes	Yes	Yes	Yes	Yes

RADIAL
CRICKET



1 STOCK COLOUR



884 RADIAL CRICKET TROUSER SIZE GUIDE

Size	XS	S	M	L	XL	2XL	3XL
Years	6/7	8/9	10/11	12/13			
Waist inches (to fit)	20/22	22/24	24/26	26/28	28/30	30/32	32/34
Waist cm (to fit)	51/56	56/61	61/66	66/71	71/76	76/81	81/86
Vatable	No	No	No	No	No	Yes	Yes

RADIAL
CRICKET

884

RADIAL CRICKET TROUSER
PREMIUM QUALITY COMFORT AND PERFORMANCE

- Specially developed 250 gramme supersoft double knit polyester
- Contrast stretch rib calf panel
- Classic ultra comfortable tapered fit
- Drawstring at waist
- Deep side pockets



QUICK DRY



EASY CARE



885

RADIAL CRICKET SLIPOVER

STYLISH AND FUNCTIONAL COORDINATED LAYER

- Specialised 2 layer bonded knit fabric
- 350 gramme textured polyester microkit fabric combined with anti pill microfleece
- Ergonomic and contemporary design for fluid mobility
- Coordinated with shirt styles 882 / 883



WIND
RESISTANT



THERMAL
BALANCE



WARMTH



EASY CARE



1 STOCK COLOUR



Cricket White

885 RADIAL CRICKET SLIPOVER SIZE GUIDE

Size	XS	S	M	L	XL	2XL	3XL				
Years	6/7	8/9	10/11	12/13							
Chest inches (to fit)	24/26	26/28	28/30	30/32	32/34	34/36	38/40	42/44	46/48	48/50	50/52
Chest cm (to fit)	61/66	66/71	71/76	76/81	81/86	86/91	97/102	107/112	117/122	122/127	127/132
Vatable	No	No	No	No	No	Yes	Yes	Yes	Yes	Yes	Yes

RADIAL
CRICKET



1 STOCK COLOUR



Cricket White

892 RADIAL CRICKET JUMPER SIZE GUIDE

Size	LY	XLY	S	M	L	XL	2XL	3XL
Years	12/13							
Chest inches (to fit)	30/32	32/34	34/36	38/40	42/44	46/48	48/50	50/52
Chest cm (to fit)	66/71	81/86	86/91	97/102	107/112	117/122	122/127	127/132
Variable	No	No	Yes	Yes	Yes	Yes	Yes	Yes

RADIAL
CRICKET

892

RADIAL CRICKET JUMPER

SMART, TAILORED, COMFORT FIT LAYER

- Specialised 2 layer bonded knit fabric
- 350 gramme textured polyester microkit fabric combined with anti pill microfleece
- Ergonomic and contemporary design for fluid mobility
- Coordinated with shirt styles 882 / 883



WIND
RESISTANT



THERMAL
BALANCE



WARMTH



EASY CARE





PRO RANGE

660

PRO TRAINING TEE

MICRO TECHNICAL TRAINING T-SHIRT

- 145gsm ultra soft performance polyester flat knit
- Contrast trim detail and scooped hem
- Moisture management
- Technical fit



LIGHTWEIGHT



QUICK DRY



BREATHABLE



EASY CARE



7 STOCK COLOUR COMBINATIONS



Black/Amber / Black/Emerald / Black/Red / Black/White
Navy/Red / Navy/Sky / Navy/White

660 PRO TRAINING TEE SIZE GUIDE

Size	XSY	SY	MY	LY	XLY	S	M	L	XL	2XL	3XL
Years	6/7	8/9	10/11	12/13							
Chest inches	24/26	26/28	28/30	30/32	32/34	34/36	38/40	42/44	46/48	48/50	50/52
Chest cm (to fit)	61/66	66/71	71/76	76/81	81/86	86/91	97/102	107/112	117/122	122/127	127/132
Vatable	No	No	No	No	No	Yes	Yes	Yes	Yes	Yes	Yes

PRO RANGE



7 STOCK COLOUR COMBINATIONS



Black/Amber / Black/Emerald / Black/Red / Black/White
Navy/Red / Navy/Sky / Navy/White

785 PREMIUM POLO SIZE GUIDE

Size	LY	XL	S	M	L	XL	2XL	3XL
Years	12/13							
Chest inches	30/32	32/34	34/36	38/40	42/44	46/48	48/50	50/52
Chest cm (to fit)	76/81	81/86	86/91	97/102	107/112	117/122	122/127	127/132
Vatable	No	No	Yes	Yes	Yes	Yes	Yes	Yes

PRO RANGE

785

PREMIUM POLO

PIQUE POLYESTER PREMIUM POLO SHIRT

- ✓ Durable 180gsm polyester pique knit fabric
- ✓ Contrast colour stitch and side panel
- ✓ Drop back hem
- ✓ Modern design which compliments the full range



BREATHABLE



QUICK DRY



EASY CARE



650

PREMIUM PRO HOODIE

COTTON RICH HOODED TOP

- 340gsm heavyweight premium cotton rich fabric
- Desirable, fitted hoodie ideal for on and off the pitch
- Features: contrast stitch and piping detail, double layer hood
- iPod cord channel and thumb-hole cuffs



THERMAL
BALANCE



WARMTH



EASY CARE



7 STOCK COLOUR COMBINATIONS



Black/Amber / Black/Emerald / Black/Red / Black/White
Navy/Red / Navy/Sky / Navy/White

650 PREMIUM PRO HOODIE SIZE GUIDE

Size	SY	MY	LY	XLY	S	M	L	XL	2XL	3XL
Years	8/9	10/11	12/13							
Chest inches	26/28	28/30	30/32	32/34	34/36	38/40	42/44	46/48	48/50	50/52
Chest cm (to fit)	66/71	71/76	76/81	81/86	86/91	97/102	107/112	117/122	122/127	127/132
Vatable	No	No	No	No	Yes	Yes	Yes	Yes	Yes	Yes

PRO RANGE



9 STOCK COLOUR COMBINATIONS



Black/Amber / Black/Emerald / Black/Red / Black/White / Black/Maroon
Navy/Amber / Navy/Red / Navy/Sky / Navy/White

812 PRO TEAM MIDLAYER SIZE GUIDE

Size	XSY	SY	MY	LY	XLY	S	M	L	XL	2XL	3XL
Years	6/7	8/9	10/11	12/13							
Chest inches	24/26	26/28	28/30	30/32	32/34	34/36	38/40	42/44	46/48	48/50	50/52
Chest cm (to fit)	61/66	66/71	71/76	76/81	81/86	86/91	97/102	107/112	117/122	122/127	127/132
Vatable	No	No	No	No	No	Yes	Yes	Yes	Yes	Yes	Yes

PRO RANGE



812

PRO TEAM MIDLAYER

PREMIUM 1/4 ZIP PANELLED MIDLAYER

- ✓ 220gsm full dull flat knit polyester with anti pill fleece reverse
- ✓ 9 team colours available
- ✓ Scooped hem and dropped back
- ✓ Premium multi-colour alternative to the best selling 790 midlayer



THERMAL
BALANCE



QUICK
DRY



WARMTH



LIGHTWEIGHT



WIND
RESISTANT



LIGHTWEIGHT



SHOWERPROOF



WARMTH



EASY CARE



REINFORCED



ACCESS ZIP

7 STOCK COLOUR COMBINATIONS



Black/Amber / Black/Emerald / Black/Red / Black/White
Navy/Red/ Navy/Sky / Navy/White

391 PRO TRAINING TOP SIZE GUIDE

Size	XS	S	M	L	XL	2XL	3XL
Years	6/7	8/9	10/11	12/13			
Chest inches	24/26	26/28	28/30	30/32	32/34	34/36	38/40
Chest cm (to fit)	61/66	66/71	71/76	76/81	81/86	86/91	97/102
Vatable	No	No	No	No	No	Yes	Yes



391

PRO TRAINING TOP

PROFESSIONAL QUALITY CREW NECK CONTACT TOP

- ✓ 105gsm pu coated lightweight polyester dobby textured fabric
- ✓ Soft brushed mesh lining
- ✓ Concealed internal access zip for print and embroidery
- ✓ Drawcord at hem and reinforced seams throughout
- ✓ Mix and match with 530 pant

PRO RANGE



CORE RANGE





2 STOCK COLOUR COMBINATIONS



Black / Navy

911 WEATHERPROOF CHANGING ROBE

Size	10-13	S	M	L	XL
Chest inches	32/34	34/36	38/40	42/44	46/48
Chest cm	81/86	86/91	97/102	107/112	117/122
Vatable	No	Yes	Yes	Yes	Yes

CORE RANGE

911

WEATHERPROOF CHANGING ROBE

FULLY WEATHERPROOF FLEECE LINED CHANGING ROBE

- Specialised fit for all outdoor and watersports changing needs
- 170 gsm waterproof (min 1000mm) pu coated outer shell
- Fully taped waterproof seams
- Heavyweight sherpa fleece lining
- Heavy duty 2-way zip
- External and internal fleece lined zipped pockets



WIND RESISTANT



SHOWERPROOF



TAPED SEAMS



WARMTH



EASY CARE



ACCESS ZIP

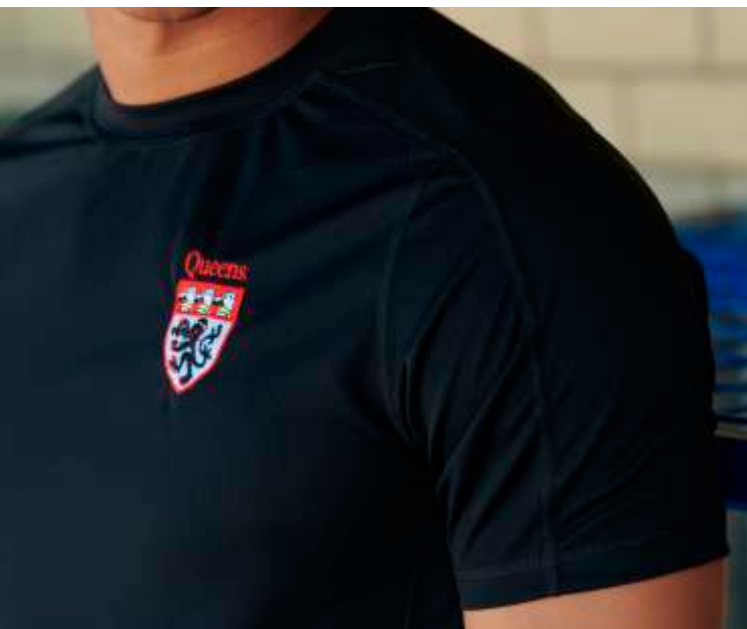


787

TRAINING TEE
MICRO TECHNICAL TRAINING T-SHIRT

- > 140gsm ultra soft performance polyester flat knit
- > Contrast trim detail and scooped hem
- > Moisture management
- > Performance fit

-  LIGHTWEIGHT
-  QUICK DRY
-  BREATHABLE
-  EASY CARE



5 STOCK COLOUR COMBINATIONS



Black / Navy / White / Royal / Red

787 TECHNICAL TEE SIZE GUIDE

Size	SY	MY	LY	XLY	S	M	L	XL	2XL	3XL
Years	8/9	10/11	12/13							
Chest inches	26/28	28/30	30/32	32/34	34/36	38/40	42/44	46/48	48/50	50/52
Chest cm	66/71	71/76	76/81	81/86	86/91	97/102	107/112	117/122	122/127	127/132
Vatable	No	No	No	No	Yes	Yes	Yes	Yes	Yes	Yes

CORE RANGE



3 STOCK COLOUR COMBINATIONS

Black / Navy / White

535 PRO RUGBY SHORT SIZE GUIDE

Size	XS	S	M	L	XL	2XL	3XL	4XL
Years	6/7	8/9	10/11	12/13				
Waist inches	20/22	22/24	24/26	26/28	28/30	30/32	32/34	34/36
Waist cm	51/56	56/61	61/66	66/71	71/76	76/81	81/86	86/91
Vatable	No	No	No	No	No	Yes	Yes	Yes

CORE RANGE

535

PRO RUGBY SHORT

PROFESSIONAL QUALITY PLAYING SHORT

- ✓ Durable, 220gsm high tenacity polyester twill fabric
- ✓ 4 way stretch panelling
- ✓ Concealed gum shield pocket
- ✓ Elasticated waist with drawcord and waist gripper
- ✓ Reinforced seams throughout



REINFORCED



EASY CARE



835

IMPACT RUGBY SHORT

TECHNICAL RIPSTOP SHORT

- Highly durable, 205gsm soft touch 2 way stretch polyester spandex ripstop fabric
- Fit for purpose
- Reinforced seams
- Stretch panelling for mobility
- Next generation technical waistband



LIGHTWEIGHT



REINFORCED



EASY CARE



2 STOCK COLOUR COMBINATIONS



Black / Navy

835 IMPACT RUGBY SHORT SIZE GUIDE

Size	LY	XLY	S	M	L	XL	2XL	3XL	4XL
Years	12/13	14							
Waist inches	26/28	28/30	30/32	32/34	36/38	38/40	40/42	42/44	44/46
Waist cm	66/71	71/76	76/81	81/86	91/97	97/102	102/107	107/112	112/117
Vatable	No	No	Yes	Yes	Yes	Yes	Yes	Yes	Yes

CORE RANGE



3 STOCK COLOUR COMBINATIONS



Black / Navy / White

671 PRO TRAINING SHORT SIZE GUIDE

Size	SY	MY	LY	XLY	S	M	L	XL	2XL	3XL
Years	8/9	10/11	12/13							
Waist inches	22/24	24/26	26/28	28/30	30/32	32/34	36/38	38/40	40/42	42/44
Waist cm	56/61	61/66	66/71	71/76	76/81	81/86	91/97	97/102	102/107	107/112
Vatable	No	No	No	No	Yes	Yes	Yes	Yes	Yes	Yes

CORE RANGE

671

PRO TRAINING SHORT

TECHNICAL TRAINING SHORT

- 120gsm matt finish 2 way stretch polyester fabric
- Contract mesh trim detail
- Moisture management
- Technical fit



LIGHTWEIGHT



QUICK DRY



EASY CARE



543

PREMIUM SKORT
HIGH STRETCH PLAYING SKORT

- 250gsm performance 4-way stretch fabric
- Quick dry function
- Soft touch
- Designed for comfort, performance and durability



QUICK DRY



EASY CARE



2 STOCK COLOUR COMBINATIONS



Black / Navy

543 PREMIUM SKORT SIZE GUIDE

Size	6-7 YRS	8-9 YRS	10-11 YRS	12-13 YRS	SIZE 6-8	SIZE 10-12	SIZE 14	SIZE 16	SIZE 18
Waist inches	18/20	20/22	22/24	24/26	26/28	28/30	30/32	32/34	34/36
Waist cm	46/51	51/56	56/61	61/66	66/71	71/76	76/81	81/86	86/91
Length inches (centre back)	10	11	12	13	14	15	16	16	16
Length cm (centre back)	25.0	28.0	31.5	33.5	36.0	38.0	39.5	40.5	41.5
Vatable	No	No	No	No	Yes	Yes	Yes	Yes	Yes

CORE RANGE



5 STOCK COLOUR COMBINATIONS



Black / Navy / Red / Royal / White

284 ALL PURPOSE BASE LAYER SIZE GUIDE

Size	SY	MY	LY	XLY	S	M	L	XL	2XL	3XL
Years	8/9	10/11	12/13							
Chest inches	26/28	28/30	30/32	32/34	34/36	38/40	42/44	46/48	48/50	50/52
Chest cm (to fit)	66/71	71/76	76/81	81/86	86/91	97/102	107/112	117/122	122/127	127/132
Vatable	No	No	No	No	Yes	Yes	Yes	Yes	Yes	Yes



THERMAL
BALANCE



QUICK DRY



WARMTH



EASY CARE



284

ALL PURPOSE BASELAYER

CLOSE FIT LONG SLEEVE TOP

- 250gsm 4 way power stretch, full dull polyester spandex fabric
- Next to the skin fabric comfort
- Regulates body temperature
- Flat lock seams
- Quick dry function

CORE RANGE

401

BASELAYER TIGHTS

CLOSE FIT TIGHTS

- ✓ 250gsm 4 way power stretch, full dull polyester spandex fabric
- ✓ Next to the skin fabric comfort
- ✓ Performance fit
- ✓ Flat lock seams
- ✓ Comfort stretch waistband



THERMAL
BALANCE



QUICK DRY



WARMTH



EASY CARE



2 STOCK COLOUR COMBINATIONS



Black / Navy

401 BASELAYER TIGHTS SIZE GUIDE

Size	SY	MY	LY	XLY	S	M	L	XL	2XL	3XL
Years	8/9	10/11	12/13							
Waist inches	22/24	24/26	26/28	28/30	30/32	32/34	34/36	38/40	40/42	42/44
Waist cm	56/61	61/66	66/71	71/76	76/81	81/86	86/91	97/102	102/107	107/112
Inside Leg cm	56	60	64	64.5	65	65.5	66	67	68	69
Vatable	No	No	No	No	Yes	Yes	Yes	Yes	Yes	Yes

CORE RANGE



2 STOCK COLOURS



Black / Navy

382 BASELAYER SHORT SIZE GUIDE

Size	SY	MY	LY	XLY	S	M	L	XL	2XL	3XL
Years	8/9	10/11	12/13							
Waist inches	22/24	24/26	26/28	28/30	30/32	32/34	36/38	38/40	40/42	42/44
Waist cm	56/61	61/66	66/71	71/76	76/81	81/86	91/97	97/102	102/107	107/112
Vatable	No	No	No	No	Yes	Yes	Yes	Yes	Yes	Yes

CORE RANGE

382

BASELAYER SHORT

CLOSE FIT STRETCH SHORT

- ✓ 250gsm 4 way power stretch, full dull polyester spandex fabric
- ✓ Next to the skin fabric comfort
- ✓ Flat lock seams for added comfort
- ✓ 100% mobility
- ✓ Team with style 284 All Purpose Baselayer



THERMAL
BALANCE



QUICK DRY



WARMTH



EASY CARE



530

ELITE SHOWERPROOF PANT

FULLY LINED LIGHTWEIGHT TROUSER
WITH 3/4 LEG ZIP

- 105gsm pu coated lightweight polyester doobby textured fabric
- Soft hand-feel jersey lining
- Elasticated waist with drawcord
- Concealed hem cord system and zip side pockets



SHOWERPROOF



WIND
RESISTANT



REINFORCED



WARMTH



EASY CARE



2 STOCK COLOURS



Black / Navy

530 ELITE SHOWERPROOF PANT SIZE GUIDE

Size	XS	S	M	L	XL	2XL	3XL
Years	6/7	8/9	10/11	12/13			
Waist inches	20/22	22/24	24/26	26/28	28/30	30/32	32/34
Waist cm	51/56	56/61	61/66	66/71	71/76	76/81	81/86
Inside Leg inches	18.5	20.5	23	25	27	29.5	30
Inside Leg cm	47	52	59	64	69	75	77
Vatable	No	No	No	No	No	Yes	Yes

CORE RANGE



2 STOCK COLOUR COMBINATIONS



Black / Navy

826 SKINNY PANT SIZE GUIDE

Size	XSY	SY	MY	LY	XLY	S	M	L	XL	2XL	3XL
Years	6/7	8/9	10/11	12/13							
Waist inches	20/22	22/24	24/26	26/28	28/30	30/32	32/34	34/36	38/40	40/42	42/44
Waist cm	51/56	56/61	61/66	66/71	71/76	76/81	81/86	86/91	97/102	102/107	107/112
Inside Leg inches	18	20	22	24	26	27	28.5	29.5	30	31	32
Inside Leg cm	46	51	56	61	66	69	73	75	77	79	81
Vatable	No	No	No	No	No	Yes	Yes	Yes	Yes	Yes	Yes

CORE RANGE



826

SKINNY PANT

PREMIUM, FITTED LEISURE AND TRAINING PANT

- 220gsm ultra soft full dull double knit polyester fabric
- Contrast stretch rib fabric for comfort fit and ease of movement
- Tapered, slim fit design with ankle zips
- Two front zip pockets



LIGHTWEIGHT



WARMTH



EASY CARE

704

WOMENS FIT STADIUM PANT

FULLY LINED WITH 3/4 LENGTH LEG ZIPS

- 135gsm high density full dull polyester
- Concealed hem drawcord system
- 3/4 length side zip and side zip pockets
- Feminine slim fit with flattering elasticated, drawcord waistband
- Soft jersey lining

- WIND RESISTANT
- REINFORCED
- SHOWERPROOF
- WARMTH
- EASY CARE



2 STOCK COLOUR COMBINATIONS



Black / Navy

704 STADIUM PANT SIZE GUIDE

Size	11-12	13-14	6	8	10	12	14	16
Waist inches	25	27	24	26	28	30	32	34
Waist cm	63	68	61	66	71	76	81	86
Inside Leg inches	27.5	29.5	30	30	31	31	31	31
Inside Leg cm	70	76	76.25	76.25	78.5	78.5	78.5	78.5
Vatable	No	No	Yes	Yes	Yes	Yes	Yes	Yes

CORE RANGE



2 STOCK COLOUR COMBINATIONS



Black / Navy

211 CLASSIC STADIUM PANT SIZE GUIDE

Size	SY	MY	LY	XL	S	M	L	XL	2XL	3XL
Years	8/9	10/11	12/13							
Waist inches	22/24	24/26	26/28	28/30	30/32	32/34	36/38	38/40	40/42	42/44
Waist cm	56/61	61/66	66/71	71/76	76/81	81/86	91/97	97/102	102/107	107/112
Inside Leg inches	20.5	23	25.5	27	29.5	30.5	31	32	32.5	33.5
Inside Leg cm	52	59	64	69	75	77	79	81	83	85
Vatable	No	No	No	No	Yes	Yes	Yes	Yes	Yes	Yes

CORE RANGE

211
CLASSIC STADIUM PANT
FULLY LINED WITH 3/4 LENGTH LEG ZIPS

- ✓ 135gsm high density full dull polyester
- ✓ Classic design ideal for contact training and general use
- ✓ Heavy duty 3/4 length side zip
- ✓ Side pockets and elasticated, drawcord waistband
- ✓ Soft jersey lining
- ✓ Concealed hem cord system



WIND
RESISTANT



LIGHTWEIGHT



REINFORCED



WARMTH



EASY CARE



903

ECLIPSE TAPERED PANT
TECHNICAL STRETCH SLIM FIT STADIUM PANT

- 160gsm specifically developed full dull technical stretch knit 100% polyester
- Fully lined with soft jersey
- Quick access lockable ankle zips
- Next generation technical waistband with drawcord
- Concealed side pockets
- A modern take on a classic stadium pant



EASY CARE



WIND
RESISTANT



WARMTH



2 STOCK COLOUR COMBINATIONS



Black / Navy

903 ECLIPSE TAPERED PANT SIZE GUIDE

Size	XS	S	M	L	XL	2XL	3XL	4XL
Years	6/7	8/9	10/11	12/13				
Waist Inches	20/22	22/24	24/26	26/28	28/30	30/32	32/34	36/38
Waist cm	51/56	56/61	61/66	66/71	71/76	76/81	81/86	91/97
Inside Leg Inches	18	20	22	24	26	27.5	28.5	29.5
Inside Leg cm	46	51	56	61	66	70	73	75
Vatable	No	No	No	No	No	Yes	Yes	Yes

CORE RANGE



2 STOCK COLOUR COMBINATIONS



Black / Navy

799 POWER STRETCH LEGGING SIZE GUIDE

Size	18/20	20/22	22/24	24/26	26/28	28/30	30/32	32/34	36/38	40/42
Waist inches	18/20	20/22	22/24	24/26	26/28	28/30	30/32	32/34	36/38	40/42
Waist cm	46/51	51/56	56/61	61/66	66/71	71/76	76/81	81/86	92/97	101/107
Inside Leg inches	22	23	24	25	25	25.5	26	26	26.5	27
Inside Leg cm	55.5	58.5	61	63	64	65	66	67	68	69
Variable	No	No	No	No	No	Yes	Yes	Yes	Yes	Yes

CORE RANGE

799

WOMENS POWER STRETCH LEGGING

HIGH STRETCH OUTERWEAR LEGGINGS

- Specially developed, superior comfort 240gsm polyester/nylon/spandex knit fabric
- Contoured flatlock seas and feminine waistband
- Great alternative to baselayer tights



BREATHABLE



QUICK DRY



WARMTH



EASY CARE

790

FUNCTIONAL MIDLAYER

MULTI-FUNCTIONAL 1/4 ZIP MIDLAYER

- 220gsm full dull flat knit polyester with anti pill fleece reverse
- Flat lock seam detail
- Modern design
- Ideal for layering with base layers and outerwear

CORE RANGE



THERMAL
BALANCE



LIGHTWEIGHT



QUICK DRY



WARMTH



EASY CARE



2 STOCK COLOUR COMBINATIONS



Black / Navy

790 FUNCTIONAL MIDLAYER SIZE GUIDE

Size	XSY	SY	MY	LY	XLY	S	M	L	XL	2XL	3XL
Years	6/7	8/9	10/11	12/13							
Chest inches	24/26	26/28	28/30	30/32	32/34	34/36	38/40	40/42	42/44	46/48	48/50
Chest cm	61/66	66/71	71/76	76/81	81/86	86/91	97/102	102/107	107/112	117/122	122/127
Vatable	No	No	No	No	No	Yes	Yes	Yes	Yes	Yes	Yes



2 STOCK COLOUR COMBINATIONS



Black / Navy

837 TECHNICAL JACKET SIZE GUIDE

Size	XL	S	M	L	XL	2XL	3XL
Chest inches	32/34	34/36	38/40	42/44	46/48	48/50	50/52
Chest cm	81/86	86/91	97/102	107/112	117/122	122/127	127/132
Vatable	No	Yes	Yes	Yes	Yes	Yes	Yes

CORE RANGE

837

TECHNICAL JACKET

WATERPROOF TECHNICAL JACKET

- ✓ Specially developed, 130gsm nylon full dull texturised 2 layer laminated fabric
- ✓ Waterproof and packable
- ✓ Adjustable hood and moulded cuff adjusters
- ✓ Ergonomic panelled design, fully tape sealed
- ✓ Waterproof zips and styled zip pullers



LIGHTWEIGHT



WATERPROOF



REINFORCED



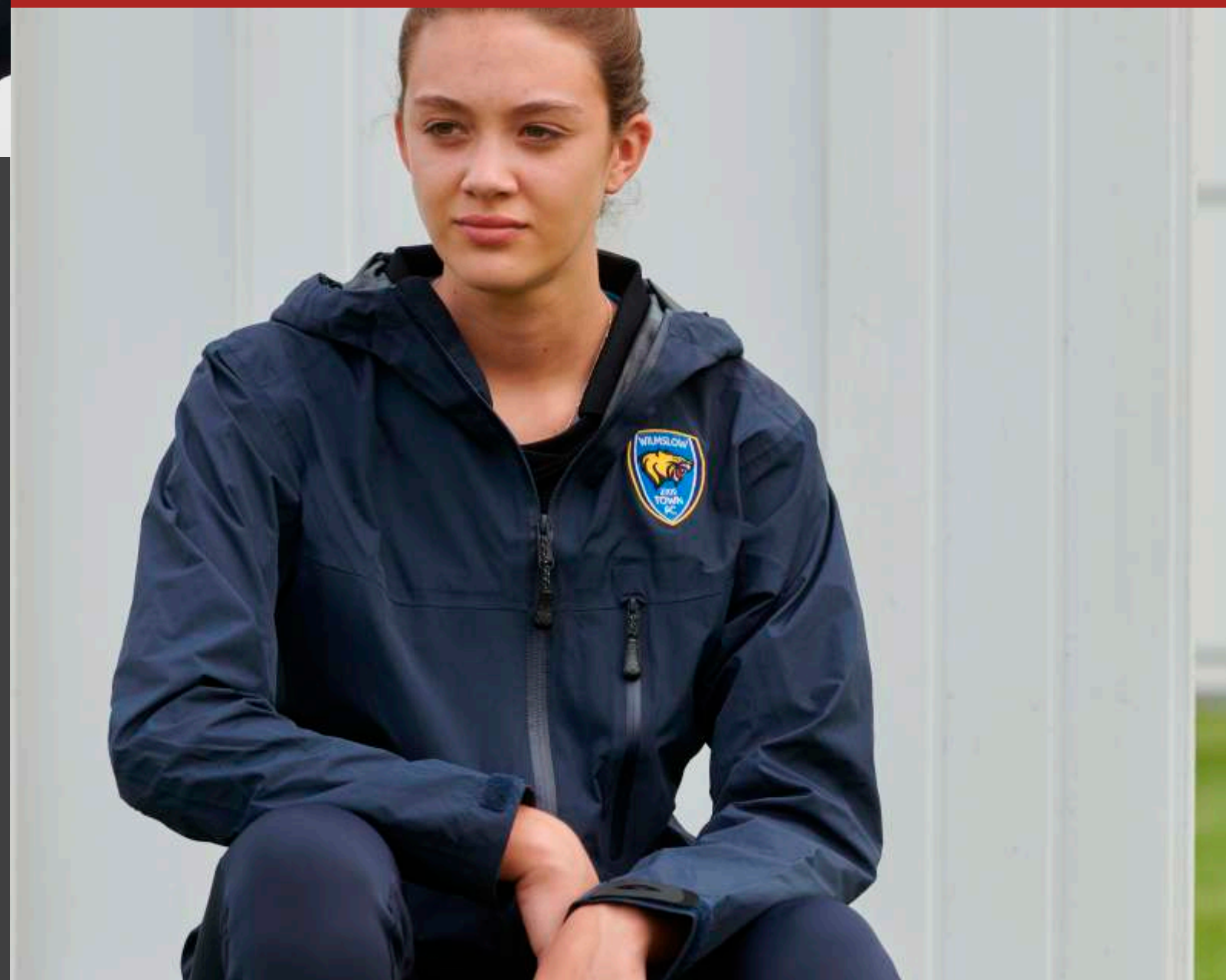
WIND
RESISTANT



TAPED SEAMS



SHOWERPROOF





WIND
RESISTANT



LIGHTWEIGHT



SHOWERPROOF



EASY CARE



ACCESS ZIP

8 STOCK COLOUR COMBINATIONS



Black / Black/Amber / Black/Emerald / Black/Red
Navy / Navy/Red / Navy/Sky / Navy White

355 ELITE SHOWERPROOF JACKET SIZE GUIDE

Size	XSY	SY	MY	LY	XLY	S	M	L	XL	2XL	3XL
Years	6/7	8/9	10/11	12/13							
Chest inches	24/26	26/28	28/30	30/32	32/34	34/36	38/40	42/44	46/48	48/50	50/52
Chest cm (to fit)	61/66	66/71	71/76	76/81	81/86	86/91	97/102	107/112	117/122	122/127	127/132
Vatable	No	No	No	No	No	Yes	Yes	Yes	Yes	Yes	Yes

CORE RANGE

355

ELITE SHOWERPROOF JACKET

MULTI-PURPOSE SHOWERPROOF CLUB JACKET

- 105gsm pu coated lightweight polyester dobby textured fabric
- Team with 530 Elite showerproof pant for complete suit
- Mesh lined with inner pocket and access zip
- Concealed hem cord system and fold away hood
- Chin guard and side pockets



784

THERMAL CONTOURED JACKET

WADDED TEAM JACKET

- 110gsm pu coated textured polyester fabric combined with high loft
- 140gsm thermal wadding
- Internal powerstretch cuffs
- Internal pocket and zipped side pockets
- Gathered lining to enhance overall fit



WIND
RESISTANT



SHOWERPROOF



WARMTH



EASY CARE



ACCESS ZIP



2 STOCK COLOUR COMBINATIONS



Black / Navy

784 THERMAL CONTOURED JACKET SIZE GUIDE

Size	SY	MY	LY	XLY	S	M	L	XL	2XL	3XL
Years	8/9	10/11	12/13							
Chest inches	26/28	28/30	30/32	32/34	34/36	38/40	42/44	44/46	46/48	48/50
Chest cm	66/71	71/76	76/81	81/86	86/91	97/102	107/112	112/117	117/122	122/127
Vatable	No	No	No	No	Yes	Yes	Yes	Yes	Yes	Yes

CORE RANGE

827

TOUCHLINE COAT

WADDED SUB COAT

- 110gsm pu coated textured polyester fabric combined with high loft
- 140gsm thermal wadding
- Internal powerstretch cuffs
- Internal pocket and zipped side pockets
- Gathered lining to enhance overall fit

CORE RANGE



WIND
RESISTANT



SHOWERPROOF



WARMTH



EASY CARE



ACCESS ZIP



2 STOCK COLOUR COMBINATIONS



Black / Navy

827 TOUCHLINE COAT
SIZE GUIDE

Size	MY/LY	XL/Y/S	M/L	XL/2XL
Chest inches	28/32	32/36	38/44	46/50
Chest cm (to fit)	71/81	81/91	97/112	117/127
Vatable	No	No	Yes	Yes

Filmed on location at:
The King's School,
Alderley Rd, Prestbury,
Macclesfield SK10 4SP

